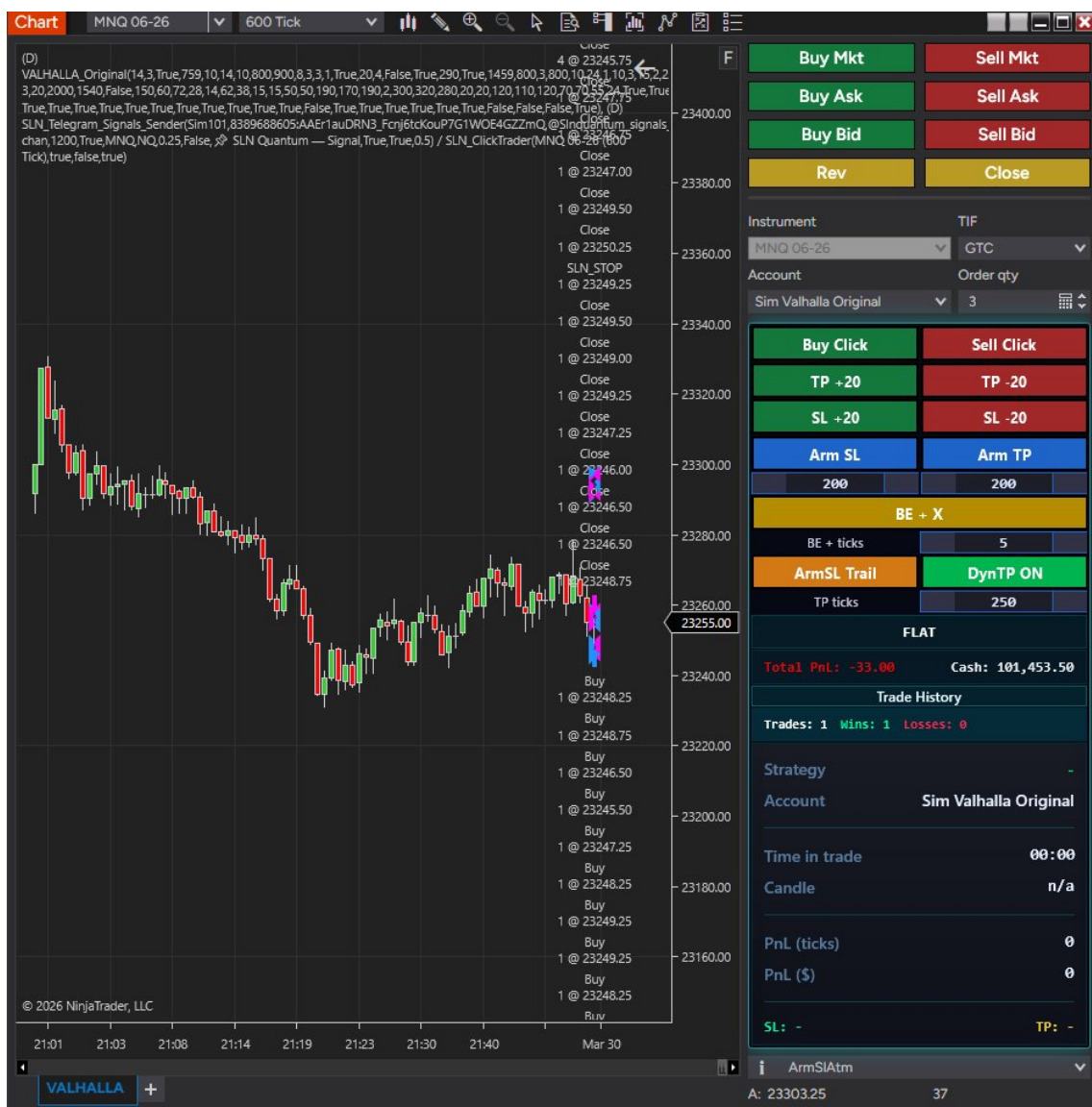


SLN_ClickTrader

Manual de Utilizare / User Manual

NinjaTrader 8 — Futures Trading Panel



Cuprins / Table of Contents

1. Prezentare Generala / Overview
2. Butoanele Native (Buy Mkt, Sell Mkt, etc.)
3. Instrument, TIF, Account, Order Qty
4. Buy Click / Sell Click
5. TP +20 / TP -20 / SL +20 / SL -20
6. Arm SL / Arm TP (Manual Standalone)
7. BE + X (Breakeven + Ticks)
8. ArmSL Trail / ArmTP Dyn (ATM Trailing & Dynamic TP)
9. Info Card (FLAT/LONG/SHORT, PnL, Trade History)
10. ATM Selector
11. Sfaturi de Utilizare / Usage Tips

1. Prezentare Generala / Overview

SLN_ClickTrader este un panou de trading injectat in ChartTrader-ul NinjaTrader 8. Oferă control manual complet asupra ordinilor de intrare, Stop Loss, Take Profit, Breakeven, Trailing SL și Dynamic TP — fără a folosi sistemul ATM nativ al NinjaTrader pentru plasarea automată a bracket-urilor.

[EN] SLN_ClickTrader is a trading panel injected into NinjaTrader 8's ChartTrader. It provides full manual control over entry orders, Stop Loss, Take Profit, Breakeven, Trailing SL and Dynamic TP — without using NinjaTrader's native ATM system for automatic bracket placement.

Caracteristici principale: Ordine standalone SL/TP fără ATM, Trailing SL din template ATM, Dynamic TP (TP-ul sare automat când prețul se apropie), BE + X ticks, compatibil cu regulile firmelor de prop trading (Apex, TopOne, etc.).

*[EN] **Key features:** Standalone SL/TP orders without ATM, Trailing SL from ATM template, Dynamic TP (TP auto-jumps when price approaches), BE + X ticks, compatible with prop firm rules (Apex, TopOne, etc.).*

2. Butoanele Native / Native Buttons



Acestea sunt butoanele native NinjaTrader, stilizate vizual de panou. Functioneaza identic cu cele originale din ChartTrader:

Buy Mkt / Sell Mkt — Ordin la pretul pietei (executie imediata)

Buy Ask / Sell Ask — Ordin limita la pretul Ask

Buy Bid / Sell Bid — Ordin limita la pretul Bid

Rev — Reverse (inchide pozitia curenta si deschide una in directia opusa)

Close — Inchide pozitia curenta la pretul pietei

[EN] These are native NinjaTrader buttons, visually styled by the panel. They work identically to the original ChartTrader buttons:

***Buy Mkt / Sell Mkt** — Market order (immediate execution)*

***Buy Ask / Sell Ask** — Limit order at Ask price*

***Buy Bid / Sell Bid** — Limit order at Bid price*

***Rev** — Reverse (close current position and open opposite)*

***Close** — Close current position at market price*

IMPORTANT: Panoul forteaza ATM-ul pe "None" la fiecare click pe aceste butoane, astfel incat NU se plaseaza SL/TP automat. SL si TP se pun manual cu butoanele de mai jos.

3. Instrument, TIF, Account, Order Qty

Instrument	TIF
MNQ 06-26	GTC
Account	Order qty
Sim Valhalla Original	3

Instrument — Instrumentul selectat (ex: MNQ 06-26)

TIF — Time In Force: GTC (Good Till Cancel) sau DAY

Account — Contul de trading selectat

Order qty — Numarul de contracte pentru fiecare ordin

[EN] Instrument — Selected instrument (e.g., MNQ 06-26)

TIF — Time In Force: GTC (Good Till Cancel) or DAY

Account — Selected trading account

Order qty — Number of contracts per order

4. Buy Click / Sell Click

Buy Click	Sell Click
TP +20	TP -20
SL +20	SL -20

Butoanele **Buy Click** si **Sell Click** activeaza modul de click pe chart:

1. Apesi **Buy Click** — butonul se evidentiaza cu chenar alb
2. Dai click pe chart la pretul dorit — se plaseaza un ordin Limit de cumparare la acel pret
3. Butonul se dezactiveaza automat dupa plasare (Auto-disarm)

La fel functioneaza **Sell Click** pentru ordine de vanzare.

IMPORTANT: Aceste butoane plaseaza DOAR ordinul de intrare. NU se pune automat SL sau TP — acestea se adauga manual cu Arm SL / Arm TP.

*[EN] The **Buy Click** and **Sell Click** buttons activate chart-click mode:*

1. Press **Buy Click** — button highlights with white border
2. Click on chart at desired price — places a Limit buy order at that price
3. Button auto-disarms after placement

Same for **Sell Click** for sell orders.

IMPORTANT: These buttons place ONLY the entry order. NO automatic SL or TP — add them manually with Arm SL / Arm TP.

5. TP +20 / TP -20 / SL +20 / SL -20

Buy Click	Sell Click
TP +20	TP -20
SL +20	SL -20

Aceste butoane modifica SL-ul sau TP-ul **existent** cu 20 de ticks:

TP +20 — Muta TP-ul cu 20 ticks mai departe (mai mult profit potential)

TP -20 — Muta TP-ul cu 20 ticks mai aproape

SL +20 — Muta SL-ul cu 20 ticks mai departe de pret (mai mult spatiu)

SL -20 — Muta SL-ul cu 20 ticks mai aproape de pret (mai strans)

Functioneaza doar cand ai o pozitie deschisa cu SL/TP deja plasate.

[EN] These buttons modify an **existing** SL or TP by 20 ticks:

TP +20 — Move TP 20 ticks further (more profit potential)

TP -20 — Move TP 20 ticks closer

SL +20 — Move SL 20 ticks further from price (more room)

SL -20 — Move SL 20 ticks closer to price (tighter)

Only works when you have an open position with SL/TP already placed.

6. Arm SL / Arm TP (Manual Standalone)



Butoanele albastre **Arm SL** si **Arm TP** plaseaza ordine standalone de Stop Loss si Take Profit, calculate fata de **pretul de intrare** (AveragePrice).

Cum functioneaza:

1. Intri in pozitie (Buy Bid, Sell Mkt, etc.)
2. Setezi numarul de ticks cu butoanele [-] si [+] (default: 200)
3. Apesi **Arm SL** — plaseaza un StopMarket la entry price - 200 ticks (pt Long)
4. Apesi **Arm TP** — plaseaza un Limit la entry price + 200 ticks (pt Long)

Pentru Short, directiile sunt inversate automat.

Ordinele sunt **independente** — fara ATM, fara bracket, fara OCO.

*[EN] The blue **Arm SL** and **Arm TP** buttons place standalone Stop Loss and Take Profit orders, calculated from the **entry price** (AveragePrice).*

How it works:

1. Enter a position (Buy Bid, Sell Mkt, etc.)
2. Set tick count with [-] and [+] buttons (default: 200)
3. Press **Arm SL** — places a StopMarket at entry price - 200 ticks (for Long)
4. Press **Arm TP** — places a Limit at entry price + 200 ticks (for Long)

For Short positions, directions are automatically reversed.

*Orders are **independent** — no ATM, no bracket, no OCO.*

7. BE + X (Breakeven + Ticks)



Butonul galben **BE + X** muta Stop Loss-ul la **breakeven + X ticks**.

Exemplu (Long la 23300, BE + 5 ticks):

- SL-ul existent se muta la $23300 + 5 \text{ ticks} = 23301.25$
- Daca nu exista SL, se creaza unul nou la acea valoare

Valoarea X se seteaza cu spinner-ul din dreapta (default: 5 ticks, pas: +/-5).
Util pentru a proteja profitul minim dupa ce pretul a mers in favoare.

*[EN] The yellow **BE + X** button moves the Stop Loss to **breakeven + X ticks**.*

Example (Long at 23300, BE + 5 ticks):

- Existing SL moves to $23300 + 5 \text{ ticks} = 23301.25$
- If no SL exists, a new one is created at that price

The X value is set with the spinner on the right (default: 5 ticks, step: +/-5).
Useful for protecting minimum profit after price moves in your favor.

8. ArmSL Trail / ArmTP Dyn



8.1 ArmSL Trail (Trailing Stop Loss)

Butonul portocaliu **ArmSL Trail** citeste template-ul ATM selectat (din dropdown-ul de jos) si plaseaza un SL cu trailing automat.

Cum functioneaza:

1. Selecteaza un ATM template din dropdown (care are trailing configurat)
2. Intra in pozitie
3. Apasa **ArmSL Trail**
4. Se pune SL la distanta din ATM, fata de pretul de intrare
5. Daca ATM-ul are trailing (step > 0), SL-ul se misca automat:
 - La fiecare tick, monitorizeaza pretul maxim/minim
 - Muta SL-ul in directia favorabila cu step-ul din ATM
 - Se dezactiveaza automat cand pozitia se inchide

[EN] The orange **ArmSL Trail** button reads the selected ATM template (from the bottom dropdown) and places a SL with automatic trailing.

How it works:

1. Select an ATM template from the dropdown (with trailing configured)
2. Enter a position
3. Press **ArmSL Trail**
4. SL is placed at the ATM distance from entry price
5. If ATM has trailing (step > 0), SL moves automatically:
 - On each tick, monitors the best price
 - Moves SL in favorable direction by ATM step
 - Auto-deactivates when position closes

8.2 ArmTP Dyn (Dynamic Take Profit)

Butonul portocaliu **ArmTP Dyn** plaseaza un TP dinamic care "sare" automat cand pretul se apropie.

Cum functioneaza:

1. Seteaza distanta initiala cu spinner-ul (default: 250 ticks)
2. Apasa **ArmTP Dyn** — butonul devine **verde** cu text "DynTP ON"
3. Se pune TP la entry price + 250 ticks
4. Cand pretul se apropie de TP (la 20 ticks distanta), TP-ul sare cu inca 20 ticks
5. Continua sa sara LA INFINIT atata timp cat piata merge in favoare
6. Apasa din nou butonul pentru a OPRI — TP-ul ramane unde este, nu mai sare
7. Se dezactiveaza automat cand pozitia se inchide

Exemplu (Long la 23000, 250 ticks initial, jump 20 ticks):

- TP initial: 23062.50 (23000 + 250 x 0.25)
- Pretul ajunge la 23057.50 (20 ticks de TP): TP sare la 23067.50
- Pretul ajunge la 23062.50 (20 ticks de noul TP): TP sare la 23072.50
- Si asa mai departe, cate 20 ticks, pana opresti butonul...

*[EN] The orange **ArmTP Dyn** button places a dynamic TP that auto-jumps when price approaches.*

How it works:

1. Set initial distance with spinner (default: 250 ticks)
2. Press **ArmTP Dyn** — button turns **green** showing "DynTP ON"
3. TP is placed at entry price + 250 ticks
4. When price gets within 20 ticks of TP, TP jumps another 20 ticks
5. Keeps jumping **INFINITELY** as long as the market moves in your favor
6. Press button again to **STOP** — TP stays where it is, no more jumping
7. Auto-deactivates when position closes

Example (Long at 23000, 250 ticks initial, 20 tick jump):

- Initial TP: 23062.50 (23000 + 250 x 0.25)
- Price reaches 23057.50 (20 ticks from TP): TP jumps to 23067.50
- Price reaches 23062.50 (20 ticks from new TP): TP jumps to 23072.50
- And so on, 20 ticks at a time, until you stop the button...

9. Info Card

FLAT	
Total PnL: -33.00	Cash: 101,453.50
Trade History	
Trades: 1 Wins: 1 Losses: 0	
Strategy	-
Account	Sim Valhalla Original
Time in trade	00:00
Candle	n/a
PnL (ticks)	0
PnL (\$)	0
SL: -	TP: -

Cardul informativ arata in timp real:

FLAT / LONG / SHORT — Starea pozitiei curente
Total PnL — Profitul/pierderea totala a sesiunii
Cash — Soldul contului
Trade History — Buton pentru istoricul tranzactiilor
Trades / Wins / Losses — Statistici ale sesiunii
Strategy — Strategia activa (daca exista)
Account — Contul selectat
Time in trade — Durata tranzactiei curente
Candle — Informatii despre candela curenta
PnL (ticks) — Profitul/pierderea in ticks
PnL (\$) — Profitul/pierderea in dolari
SL: / TP: — Distanta SL si TP in ticks si procent

[EN] The info card shows real-time data:

FLAT / LONG / SHORT — Current position state
Total PnL — Total session profit/loss
Cash — Account balance
Trade History — Button for trade history
Trades / Wins / Losses — Session statistics

Strategy — Active strategy (if any)

Account — Selected account

Time in trade — Current trade duration

Candle — Current candle info

PnL (ticks) — Profit/loss in ticks

PnL (\$) — Profit/loss in dollars

SL: / TP: — SL and TP distance in ticks and percentage

10. ATM Selector



Dropdown-ul ATM de la baza panoului este selectorul nativ NinjaTrader.

Utilizare:

- Selecteaza un ATM template pentru **ArmSL Trail** — acesta citeste SL-ul si parametrii de trailing din template-ul selectat
- Pentru utilizare normala (Arm SL / Arm TP), lasa pe "**None**"
- Panoul forteaza automat ATM-ul pe "None" la fiecare click pe butoanele native pentru a preveni plasarea automata de SL/TP bracket

[EN] The ATM dropdown at the bottom is NinjaTrader's native selector.

Usage:

- Select an ATM template for **ArmSL Trail** — it reads SL and trailing parameters from the selected template
- For normal use (Arm SL / Arm TP), leave on "**None**"
- The panel auto-forces ATM to "None" on each native button click to prevent automatic SL/TP bracket placement

11. Sfaturi de Utilizare / Usage Tips

Flux tipic de tranzactionare:

1. Selecteaza contul si instrumentul (MNQ, ES, NQ, etc.)
2. Seteaza Order qty (numarul de contracte)
3. Intra in pozitie cu Buy Bid / Sell Ask sau Buy Click / Sell Click
4. Imediat dupa intrare, apasa **Arm SL** (200 ticks) pentru protectie
5. Apasa **ArmTP Dyn** (250 ticks) pentru TP dinamic
6. Cand pretul merge in favoare, apasa **BE + X** (5 ticks) pentru breakeven
7. Ajusteaza SL/TP cu butoanele +20/-20 dupa necesitate
8. Dynamic TP sare automat — lasa-l sa mearga
9. Apasa butonul verde "DynTP ON" pentru a opri salturile si a lasa TP-ul fix

Flux alternativ cu Trailing:

1. Selecteaza un ATM template cu trailing configurat
2. Intra in pozitie
3. Apasa **ArmSL Trail** — SL-ul se misca automat
4. Apasa **ArmTP Dyn** — TP-ul sare automat
5. Trailing SL + Dynamic TP lucreaza impreuna pentru a maximiza profitul

[EN] Typical trading flow:

1. *Select account and instrument (MNQ, ES, NQ, etc.)*
2. *Set Order qty (number of contracts)*
3. *Enter position with Buy Bid / Sell Ask or Buy Click / Sell Click*
4. *Immediately after entry, press **Arm SL** (200 ticks) for protection*
5. *Press **ArmTP Dyn** (250 ticks) for dynamic TP*
6. *When price moves in your favor, press **BE + X** (5 ticks) for breakeven*
7. *Adjust SL/TP with +20/-20 buttons as needed*
8. *Dynamic TP auto-jumps — let it run*
9. *Press green "DynTP ON" button to stop jumping and fix TP in place*

Alternative flow with Trailing:

1. *Select an ATM template with trailing configured*
2. *Enter position*
3. *Press **ArmSL Trail** — SL moves automatically*
4. *Press **ArmTP Dyn** — TP jumps automatically*
5. *Trailing SL + Dynamic TP work together to maximize profit*