

# 550 LOCK DOWN

---

Complete Automated Trading Method  
3 Strategies + SLN Trade Copier

Thor • Freya • Valhalla

<b>Objective</b>	\$550 daily target
<b>Framework</b>	3 automated strategies + Trade Copier
<b>Usage</b>	50K funded accounts / simulation
<b>Automation</b>	100% hands-free with Auto Schedule, Auto Master, Auto Recovery
<b>Licensing</b>	Official NinjaTrader Ecosystem vendor products

---

Version 2.0 • April 2026

Educational document. Not financial advice.

© 2026 SLN Quantum — slnquantum.com

# Table of Contents

---

1. Introduction — Why 550 LOCK DOWN?
2. The Math Behind \$550 — Payout Structure Explained
3. Why Tick Charts? (500 / 600 / 800 Tick)
4. The 3 Strategies: Thor, Freya, Valhalla
5. Backtest Results — Jan 2025 – Mar 2026
6. Daily Trading Schedule
7. SLN Trade Copier — The Command Center
8. Full Automation: How Everything Works Together
9. Trail Goal — Phased Profit Protection
10. The \$550 Rule: Lock Down and Walk Away
11. Risk Management
12. Conclusions and Recommendations

# 1. Introduction — Why 550 LOCK DOWN?

---

If you trade 50K funded accounts, you know the path to payout is not just about profit — it's about discipline. The 550 LOCK DOWN method was built around a simple, repeatable objective: a daily target of \$550, after which the trading day ends automatically.

Why \$550? Because trailing drawdown and consistency rules require a safety margin. Instead of trying to extract maximum profit each day, we choose a threshold that supports stability and protects long-term progress.

The 3 strategies — Thor, Freya, and Valhalla — work together across sessions. Execution, risk, and schedule are fully coordinated through SLN Trade Copier, running **100% automatically**.

**Important:** On accumulation days without clear direction, we do not recommend trading. Patience is part of the method.

## 2. The Math Behind \$550 — Payout Structure Explained

---

On a 50K Intraday funded account, to request a payout you need **5 qualifying trading days**, where each qualifying day must have a minimum of **\$200 net profit**. The maximum payouts are, in order: \$1,500, \$2,000, \$2,500, \$2,500, \$3,000, \$3,000 — up to 6 payouts total.

The \$550 daily target is not an arbitrary number. It is specifically calculated to allow you to complete the 5 qualifying days, claim the current payout, AND build a buffer for the next payout or for potential losses. There is also a **50% consistency rule**: no single profitable day can represent 50% or more of total profit since the last approved payout. At \$550/day, you stay comfortably below this limit.

### ***The Simple Math:***

If you make \$550/day for 5 days = **\$2,750 profit**. At payout 1, you withdraw \$1,500, leaving \$1,250 as buffer. Then 5 more days at \$550 = another \$2,750. At payout 2 you withdraw \$2,000, leaving \$2,000 buffer for payout 3.

By payout 3, you have enough buffer that you only need \$200/day for 5 days (just \$1,000 total). Combined with the \$2,000 buffer, you have \$3,000 available — withdraw \$2,500 at payout 3, keep \$500 buffer.

### ***Optimal Structure for All 6 Payouts:***

Payout	Amount	Days at \$550	Days at \$200	Total Days
1	\$1,500	5	0	5
2	\$2,000	5	0	5
3	\$2,500	0	5	5
4	\$2,500	5	0	5
5	\$3,000	5	0	5
6	\$3,000	5	0	5

### ***Summary:***

- **25 trading days at \$550 + 5 trading days at \$200 = 30 total days**
- **Total payouts: \$15,500** from a single 50K account
- Each payout builds buffer for the next, creating a self-sustaining cycle

“I use a \$550 daily target because in 5 days I make \$2,750, which lets me not only claim the payout but also build buffer for the next one. After the first two payouts, the accumulated buffer lets me go down to just \$200/day for payout 3. For all 6 payouts, the optimal plan is 25 days at \$550 and 5 days at \$200 — 30 trading days total.”

### 3. Why Tick Charts?

---

The system uses exclusively Tick charts. A Tick chart creates a new candle after a fixed number of transactions, reflecting real market activity more accurately than time-based charts.

When the market is active, candles form quickly. When calm, they form slowly. The result is a cleaner picture with less noise, and closer alignment between backtest and live execution.

Strategy	Tick Chart	Primary Role
Thor	500 Tick	High granularity for fast New York moves
Valhalla	600 Tick	Balance for Asia session
Freya	800 Tick	Wider frame for London trends

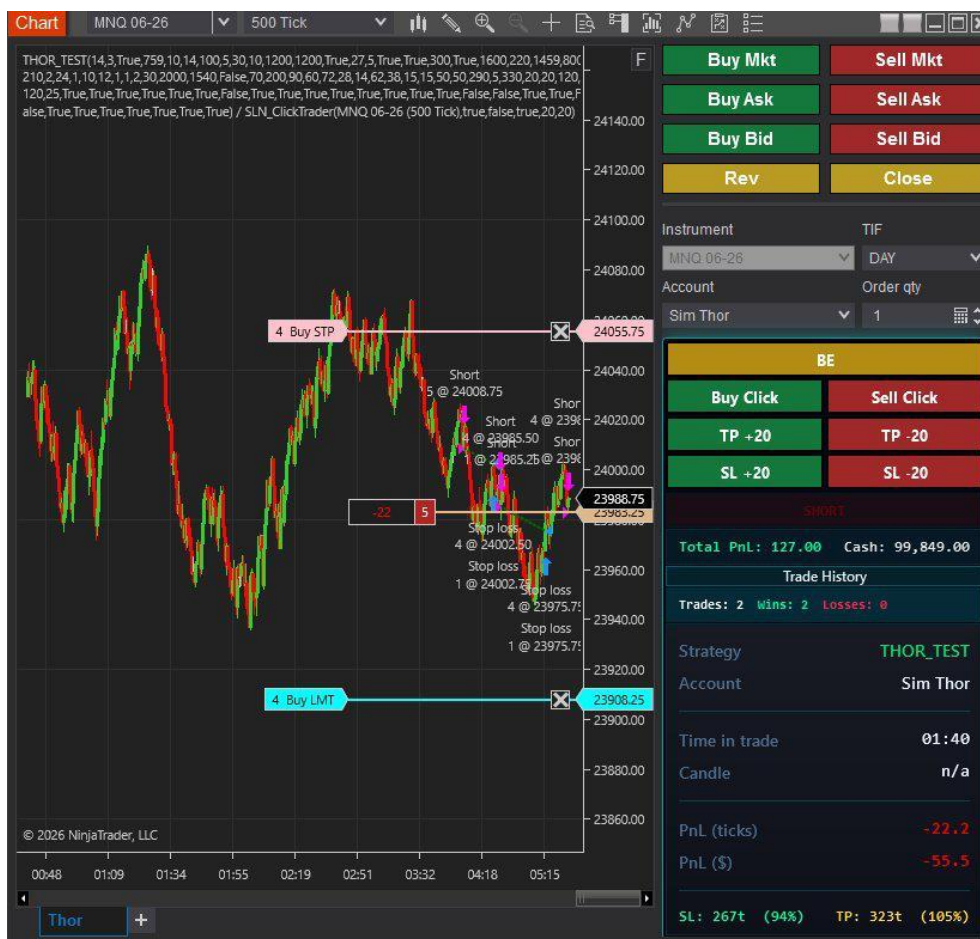
## 4. The 3 Strategies

Each strategy has its own character and can be controlled centrally through SLN Trade Copier.

### 4.1 THOR — The Power of New York

Thor is the most aggressive strategy, built for decisive New York moves on 500 Tick MNQ.

- Heiken Ashi signal with real-price execution
- ATR Filter + Anti-Chop filter
- Break-Even at 50 ticks, Dynamic TP
- Partial Profit Taking
- Loss Guard: pause after 2 consecutive losses
- Friday Filter: tight SL on Fridays
- Full Telegram remote control



Thor in action — New York session on MNQ 06-26 (500 Tick).

Trade History

Trade history (LONG/SHORT, entry/exit time & price, WIN green / LOSS red) Clear

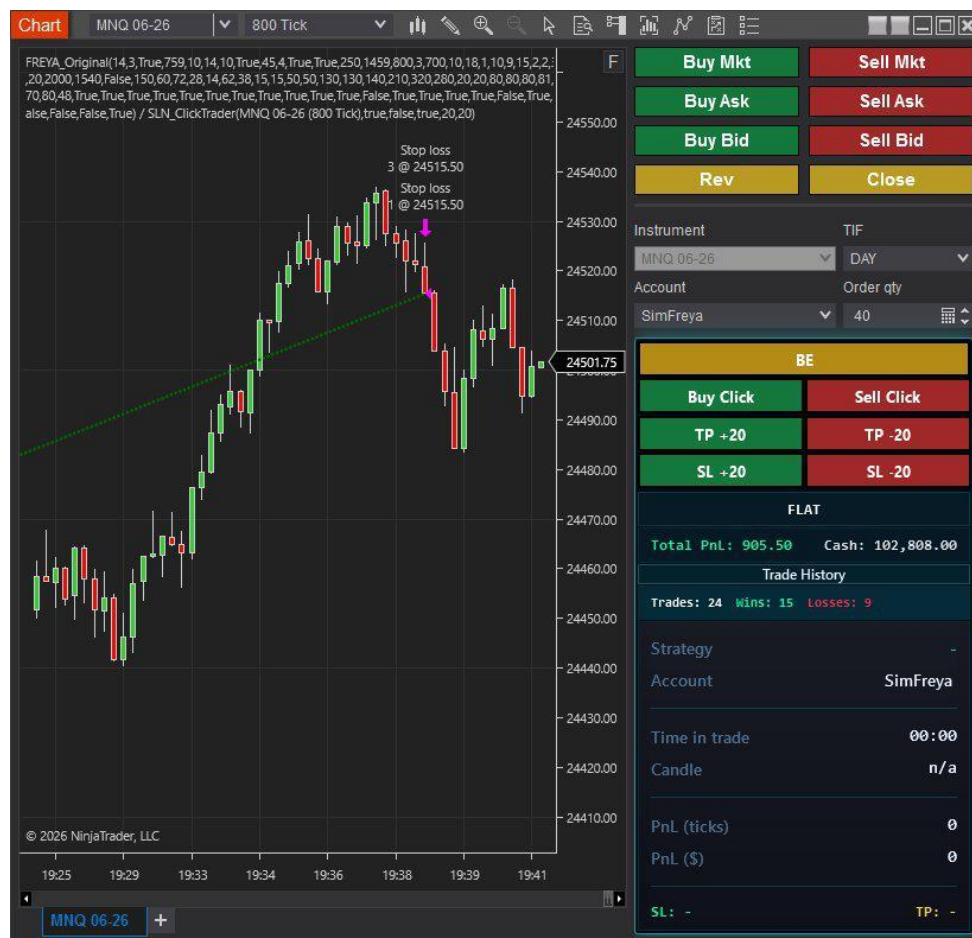
#	Side	Entry Time	Entry	Exit Time	Exit	PnL
25	LONG	14:38:40	24528.25	14:41:16	24480.25	-190.50
24	LONG	14:33:12	24484.00	14:37:54	24496.75	50.00
23	LONG	13:51:48	24590.88	13:53:09	24602.50	50.50
22	LONG	13:31:08	24489.75	13:41:30	24543.50	220.00
21	LONG	13:16:22	24437.00	13:20:03	24503.25	267.50
20	LONG	13:02:11	24401.63	13:05:29	24424.75	91.50
19	LONG	12:51:56	24459.88	12:53:27	24472.00	47.50
18	LONG	12:33:19	24647.00	12:33:50	24665.25	60.00
17	LONG	12:30:23	24539.75	12:32:27	24597.75	231.00
16	SHORT	11:50:09	23832.50	11:50:26	23879.00	-190.00
15	SHORT	11:38:27	23864.50	11:42:56	23850.50	50.00
14	LONG	11:18:50	23906.25	11:21:50	23858.00	-191.00
13	LONG	11:17:25	23885.75	11:17:49	23893.25	15.00
12	SHORT	10:43:23	23866.25	11:09:17	23913.50	-190.00
11	LONG	09:46:38	23933.00	10:24:27	23946.00	47.50
10	LONG	09:22:48	23913.38	09:35:14	23927.75	50.50
9	SHORT	08:57:55	23827.25	09:00:33	23874.50	-190.50
8	SHORT	08:40:26	23807.75	08:45:50	23858.00	-190.00
7	SHORT	08:20:34	23865.88	08:26:04	23811.25	217.50
6	SHORT	07:26:47	23927.25	07:42:51	23886.75	162.00
5	SHORT	07:05:11	23950.75	07:15:10	23938.25	50.00
4	SHORT	06:41:01	23979.75	06:55:53	23961.75	69.00
3	LONG	06:47:48	23904.00	06:30:00	23906.50	47.50

Thor trade history — combination of LONG and SHORT entries.

## 4.2 FREYA — The Guardian of London

Freya is more conservative, optimized for London and smoother trends on 800 Tick. Enforces strict R:R ratios.

- R:R Gate: blocks entries below minimum ratio
- EMA Trend + EMA Slope + RSI filters
- Re-entry Guard with cooldown
- ADX Tie-Break
- Trailing stop after 120 ticks
- Telegram remote control

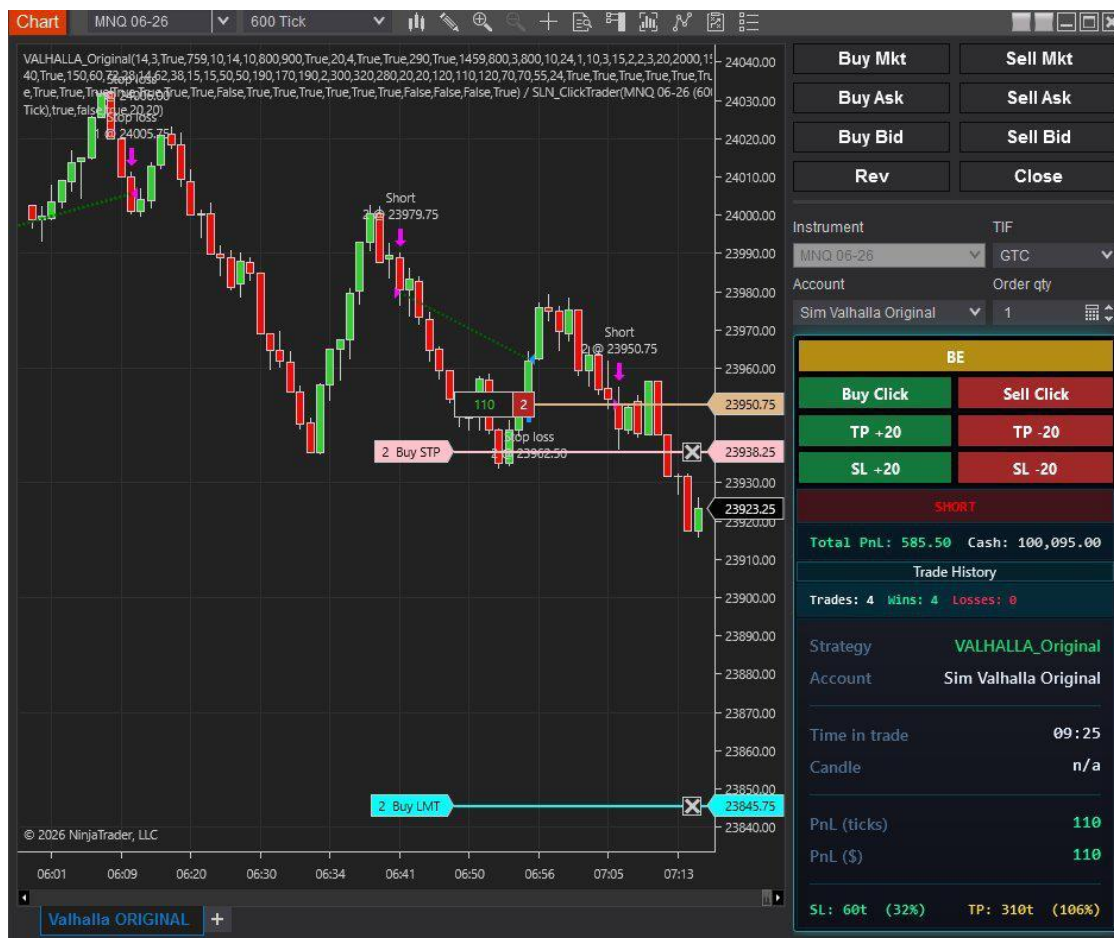


Freya — 800 Tick session with performance and control panel.

### 4.3 VALHALLA — The Master of Asia

Valhalla is designed for the calmer Asia session on 600 Tick. Takes advantage of breakouts at a slower pace. Recommended: 1–2 contracts.

- Heiken Ashi hybrid + FVG momentum filter
- Anti-Chop + Session Filter
- Separate SL/TP for Long/Short
- Dynamic TP with threat detection
- Full risk stack + Telegram



Valhalla — Asia session performance (600 Tick).

### 4.4 All 3 Strategies Running Simultaneously

All 3 strategies can run at the same time, each on its own Tick chart. Internal diversification compensates weaker periods of one strategy with results from the others.



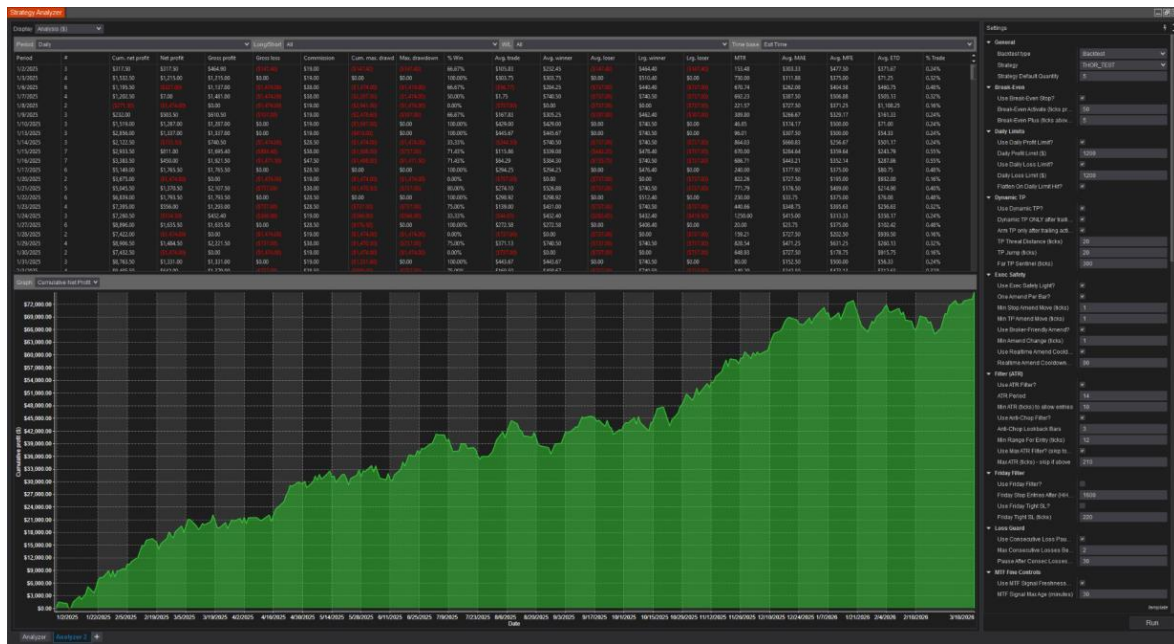
Valhalla, Freya, and Thor running simultaneously on 600T, 800T, and 500T.

**Note:** Session assignments are recommendations, not absolute rules. Thor can perform in London, Freya in Asia, Valhalla in New York.

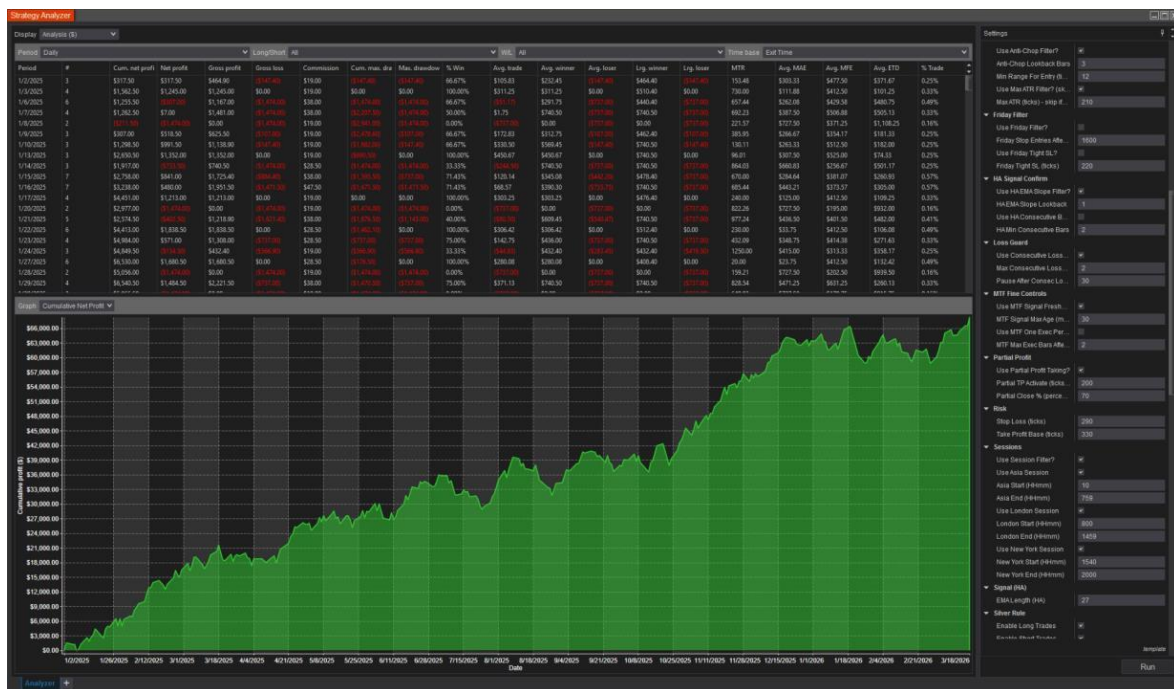
# 5. Backtest Results — January 2025 – March 2026

All backtests run with commissions and slippage included.

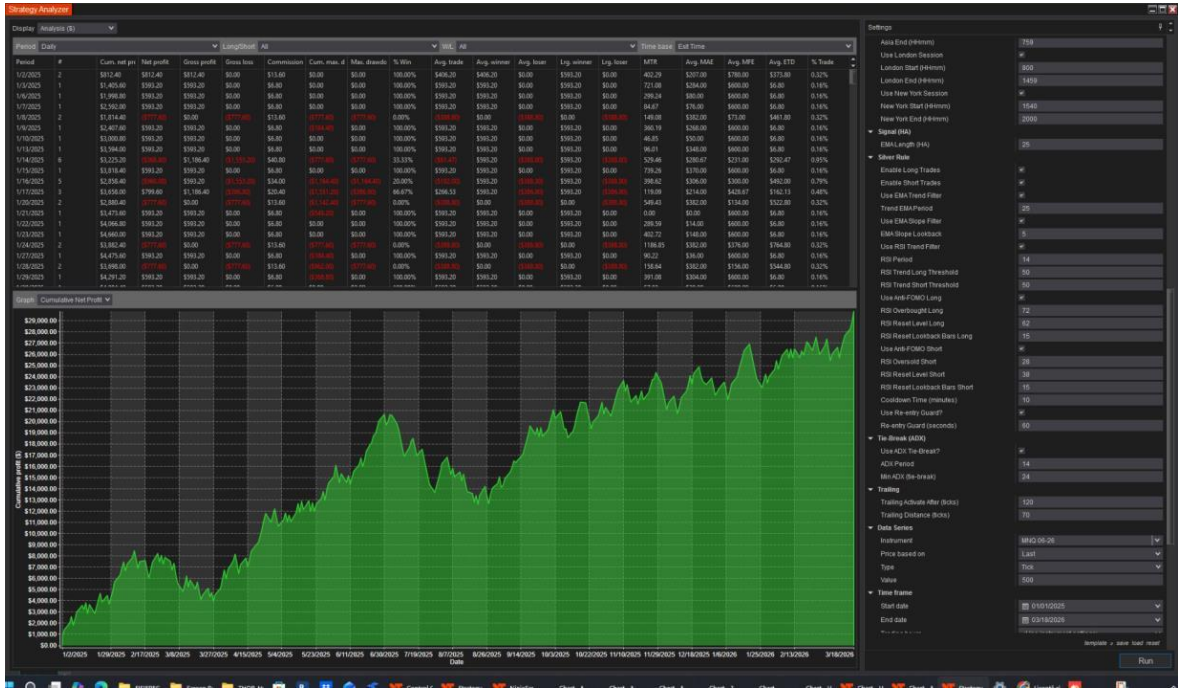
Strategy	Cumulative Profit	Profile
Thor	~\$70,000	Aggressive, consistent ascending curve
Freya	~\$38,000	Linear, conservative, lower drawdowns
Valhalla	~\$29,000	Calmer sessions, selective signals



Backtest Thor — profit curve and key settings in Strategy Analyzer.



Backtest Freya — more linear profile and conservative behavior.



Backtest Valhalla — specialized for calmer sessions.

## 6. Daily Trading Schedule

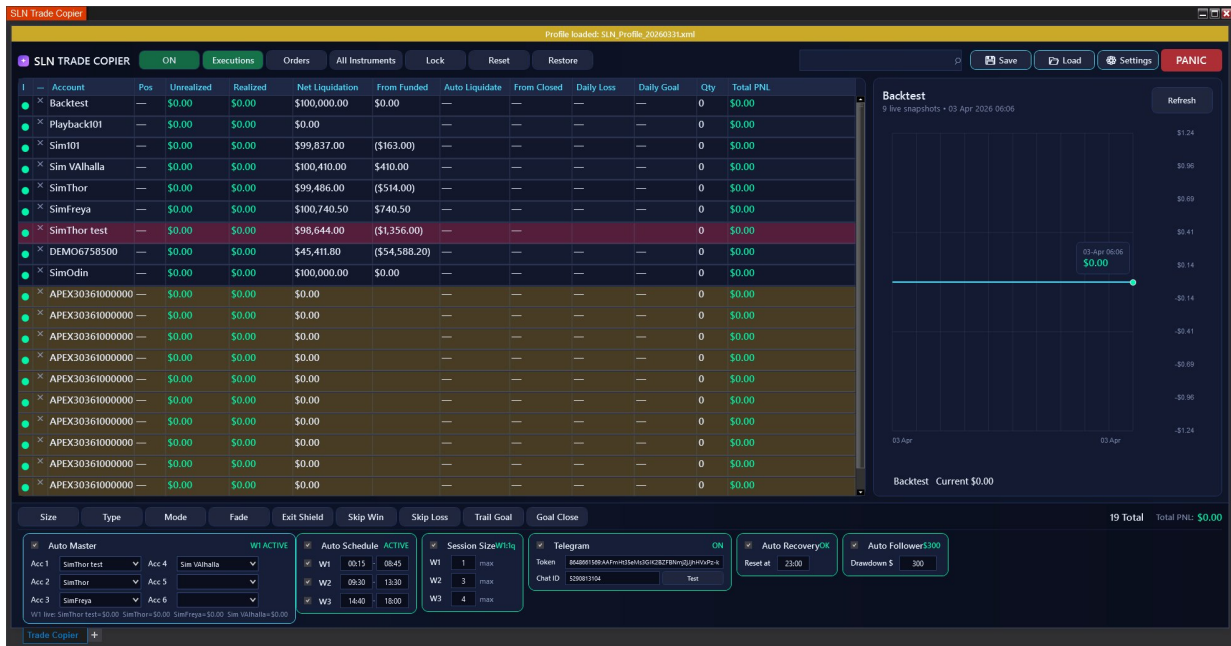
---

SLN Trade Copier manages start/stop automatically based on 3 time windows — **no manual intervention**.

Window	Time	Session	What Happens
W1	00:30—07:45	Asia	All 3 strategies run. Valhalla: 1–2 contracts.
W2	09:30—11:30	London	Auto Master selects best performer.
W3	14:40—18:00	New York	Continues only if target not yet reached.

**Control rule:** Copier stops at \$550 profit or \$550 loss automatically.





Account grid — master (red), followers (yellow), killed (dark red), paused (amber).

# 8. Full Automation: How Everything Works Together

The method runs 100% automatically once configured.

## Auto Master — Automatic Master Selection

Monitors up to 6 accounts. At the end of each window, selects the best performer as master for the next window.



Auto Master panel — 6 accounts, monitoring state.

## Auto Schedule — Time-Based Control

Starts and stops copier automatically based on W1/W2/W3 time windows.



Auto Schedule — W1, W2, W3 with configurable times.

## Session Size — Contract Limits per Window

Caps maximum contracts per follower per window. Example: W1=1, W2=3, W3=2.



Session Size panel.

### ***Auto Recovery — Daily Reset***

Runs once per day: clears killed/paused, resets Trail Goal, re-enables limits, sets Acc 1 as master.



Auto Recovery panel.

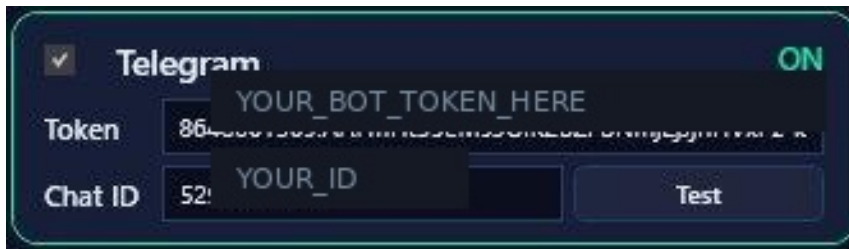
### ***Auto Follower — Automatic Enrollment***

Scans accounts and enrolls those with enough drawdown. Accounts near liquidation are excluded.



Auto Follower panel.

### ***Telegram — Notifications and Remote Control***



Telegram setup — Token, Chat ID, Test button.

## Evolution Chart



Real-time PnL evolution chart for selected account.

## Complete Daily Cycle (100% Automatic):

Time	What Happens Automatically
23:00	Auto Recovery restores accounts. Acc 1 becomes master.
00:30 (W1)	Auto Schedule starts copier. Auto Master monitors.
07:45 (W1 end)	Auto Master selects best account as master for W2.
09:30 (W2)	Copier runs with new master.
11:30 (W2 end)	Auto Master re-evaluates for W3.
14:40 (W3)	Copier runs. Trail Goal + Daily Goal protect profits.

<b>Time</b>	<b>What Happens Automatically</b>
18:00 (W3 end)	Auto Schedule stops. Day complete.
23:00	Cycle repeats.

## 9. Trail Goal — Phased Profit Protection

---

Trail Goal protects partial profit and reduces risk after a threshold. Works in 2 phases.

**Phase 1 (Normal):** Account trades with set size (e.g. 4 contracts).

**Phase 2 (Protection):** Activates when account is FLAT and realized PnL  $\geq$  threshold.

**Example: Daily Goal=\$550, Trail Goal=\$350/20%/2q**

Situation	What Happens
Single trade goes to \$550 unrealized	Daily Goal closes it. Trail Goal does NOT intervene.
Trade 1: +\$200, Trade 2: +\$180, flat	Realized=\$380 $\geq$ \$350. PHASE 2: size drops to 2.
Phase 2, PnL drops to \$270	Drawback > 20%. PAUSE — profit protected.
Phase 2, PnL rises to \$550	Daily Goal closes. Profit realized.

- **Threshold (\$350):** When Phase 2 activates
- **Protect % (20%):** Max PnL drop before PAUSE
- **Phase 2 Size (2q):** Reduced contracts

## 10. The \$550 Rule: Lock Down and Walk Away

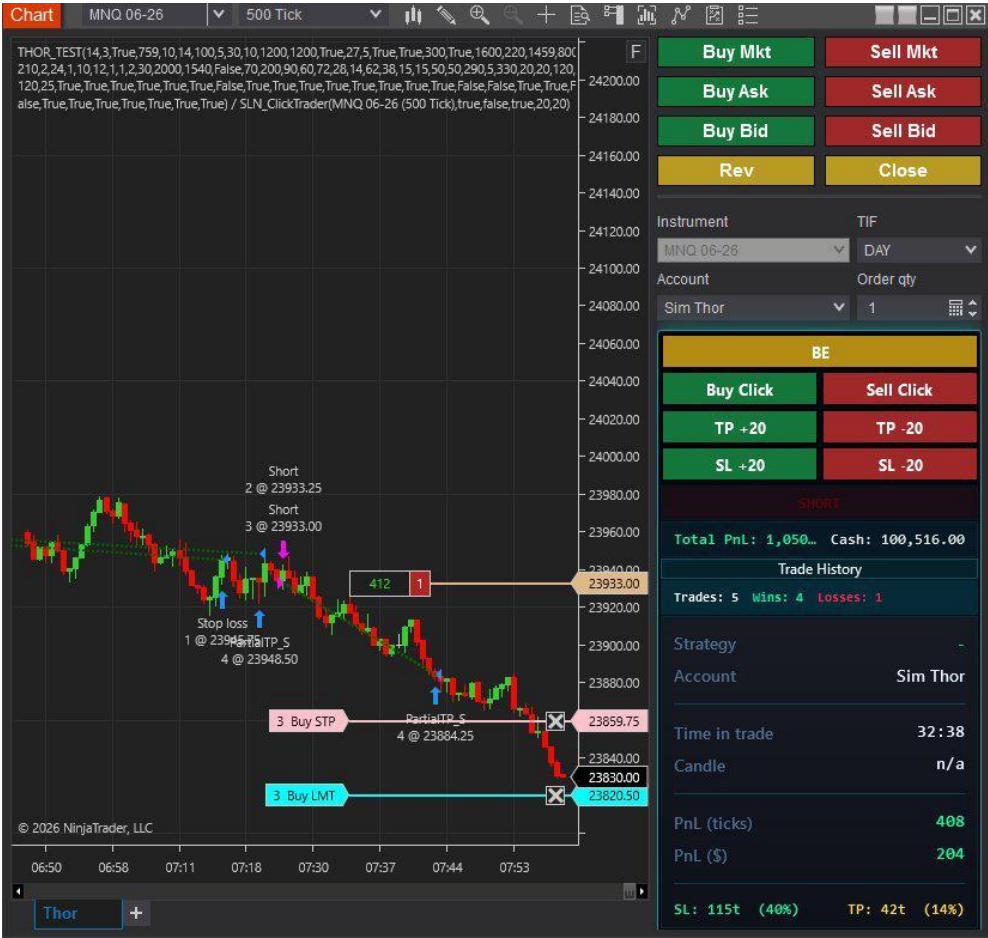
---

Once a follower reaches \$550 profit, it **stops trading automatically**:

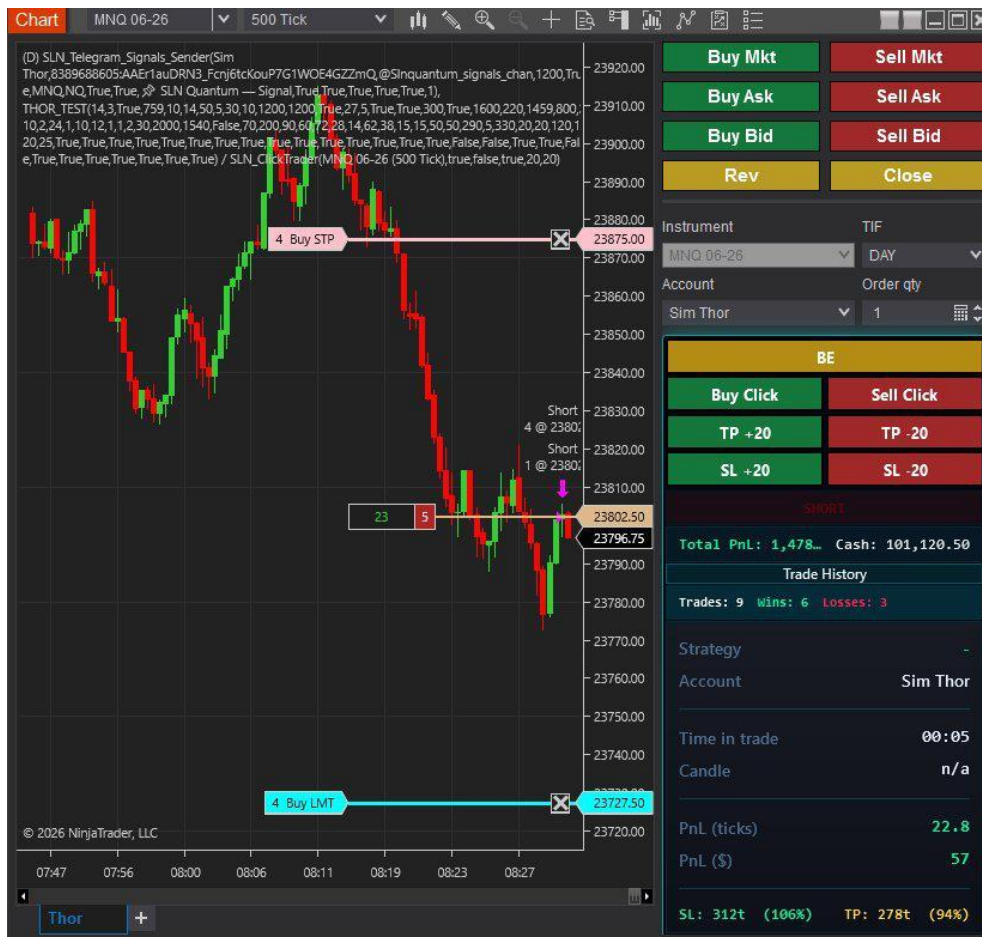
- **Goal Close:** Follower closes positions IMMEDIATELY at \$550.
- **Account KILLED:** No more trades. Locked for the rest of the day.
- **Master continues:** Unaffected, runs for other followers.
- **Trail Goal protects:** At \$350, contracts drop 4→2, 20% drawback pause.
- **Daily Loss mirror:** At -\$550, account also killed.
- **Auto Recovery:** At 23:00, everything resets for next cycle.

This is built into the system. The copier enforces these rules automatically.

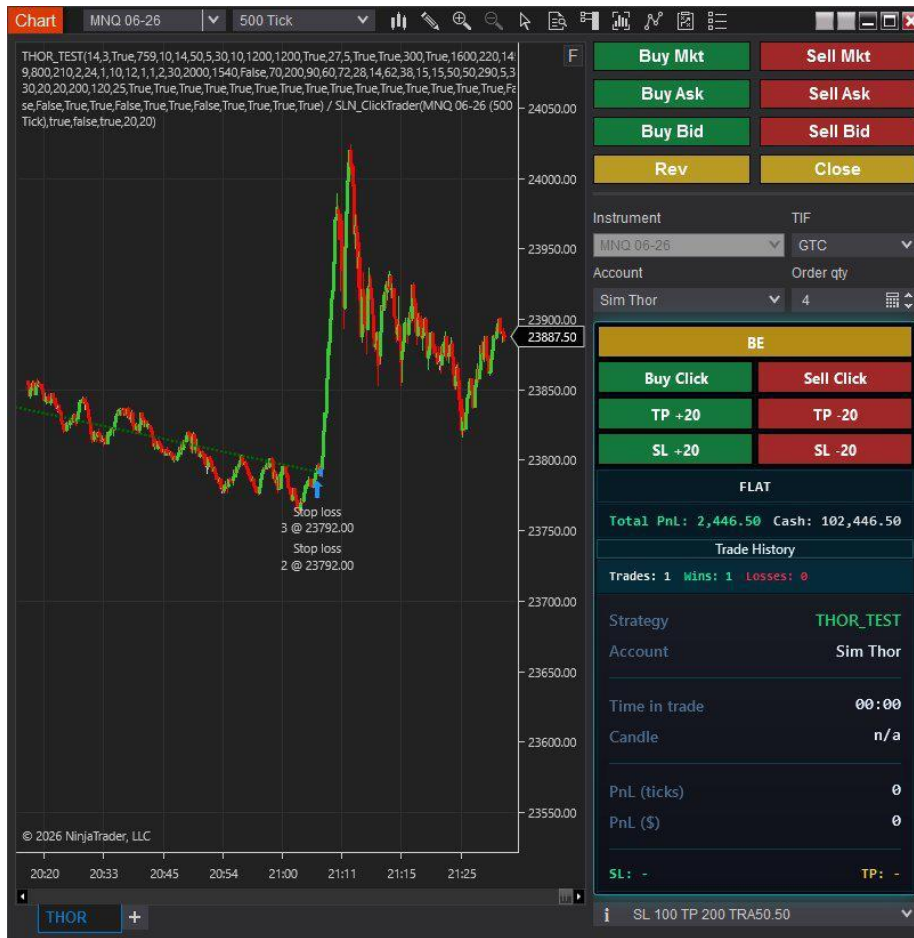
# Live Session Examples



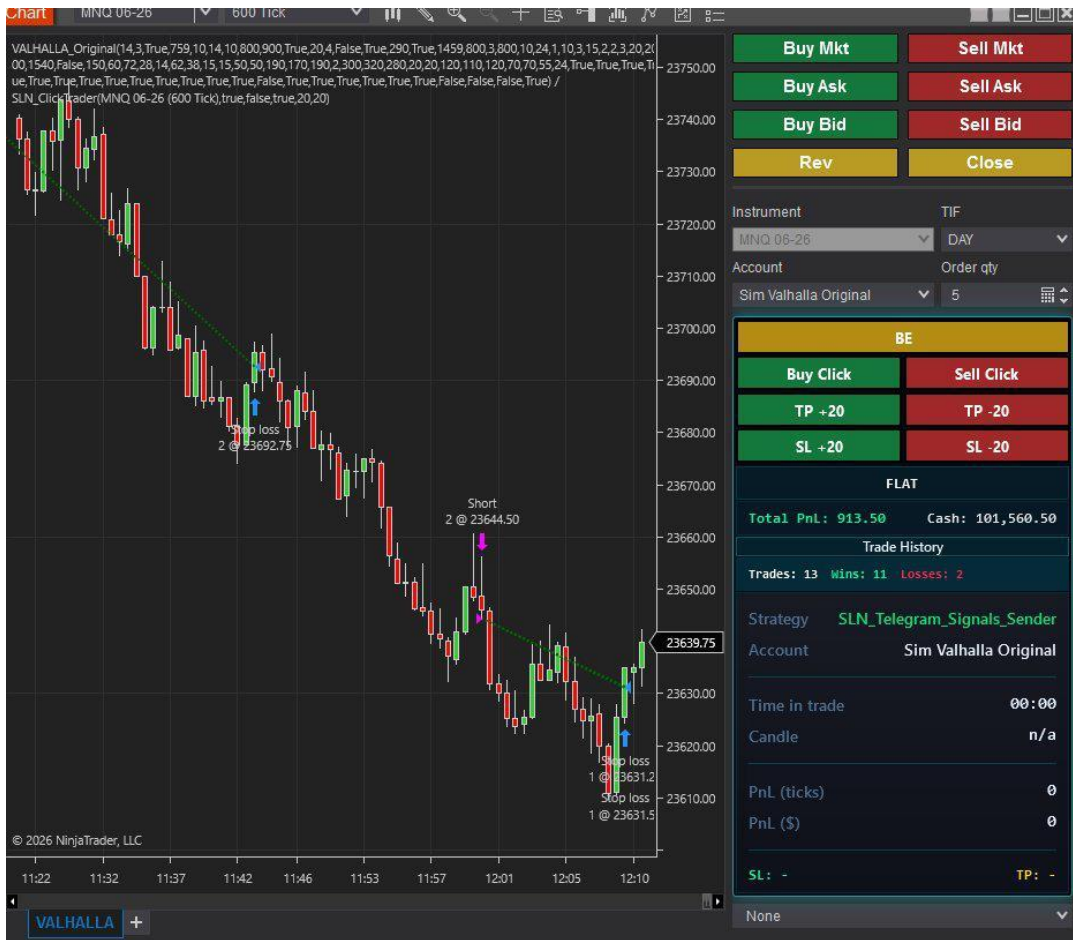
Thor — \$1,050 profit, 5 trades, 4 winners.



Thor — \$1,478 profit, 9 trades.



Thor — \$2,446.50 from a single trade with trailing.



Valhalla — \$913.50 profit, 13 trades, high win rate in Asia.

# 11. Risk Management

---

Protection Layer	Component	Effect
Daily Goal (\$550)	Trade Copier	Stops at target profit
Daily Loss (\$550)	Trade Copier	Stops at max loss
Goal Close	Trade Copier	Independent close from master
Trail Goal (20%)	Trade Copier	Reduces size + pauses on drawback
Auto Schedule	Trade Copier	Limits to predefined windows
Session Size	Trade Copier	Caps contracts per window
Auto Master	Trade Copier	Selects best performer
Auto Recovery	Trade Copier	Daily reset
PANIC	Trade Copier	Closes ALL positions instantly
SL / TP	Strategies	Per trade protection
Loss Guard	Strategies	Pause after consecutive losses
ATR / Chop	Strategies	Block weak market entries
R:R Gate	Freya	Block below min R:R ratio

**Risk warning:** Trading involves significant risks. Loss of capital is possible. Do not trade with money you cannot afford to lose.

## 12. Conclusions and Recommendations

---

550 LOCK DOWN is about consistency, discipline, and a fully automated process.

- Always test on simulation accounts first.
- Respect the \$550 target and risk limit.
- Avoid trading on directionless days.
- Use Auto Schedule for discipline.
- Let the system work within its rules.

**3 strategies • 1 Trade Copier • \$550 daily target • 100% automated**

Consistency remains the key to success in trading.